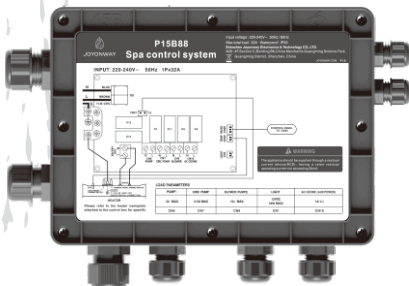


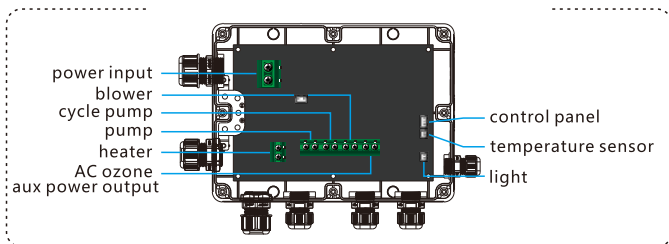


JOYONWAY
— byboospa —

P15B88 control system

Quick installation guide





I

Configure and connect the loads, when the system is powered off

LOAD PARAMETERS

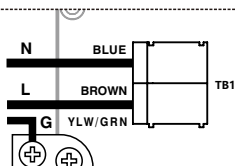
PUMP1	CIRC PUMP	BLOWER(PUMP2)	LIGHT	AC OZONE (AUX POWER)
10A MAX	2.5A MAX	10A MAX	12VDC 18W MAX	1A MAX
CN6	CN7	CN9	CN1	CN10

1

II

Connect the main power (when the control system is powered off)

Voltage input : 220-240V~
50Hz 1P*32A



III

proper functioning

When the tub is fully filled with water and powered on, the control system will be able to work properly.



JOYONWAY

byboospa

Shenzhen Joyonway Electronics & Technology CO.,LTD.
Boospa Group

ADD : - 4F,Section C,Building B6,China Merchants Guangming Science Park,
Guanguang Road 3009,Guangming New District,Shenzhen, China
- 3 Impasse Sirius 44470 Carquefou France

TEL : +86 (755) 26010705 / +33 (0) 2 55 99 57 57

WEB : www.joyonway.com / www.joyonway.eu



安卓版



App Store版

AFTER-SALES SERVICE :

China TEL: (+86) 13510031581海外电话

Europe TEL: +33 (0) 2 55 99 57 57

www.joyonway.eu