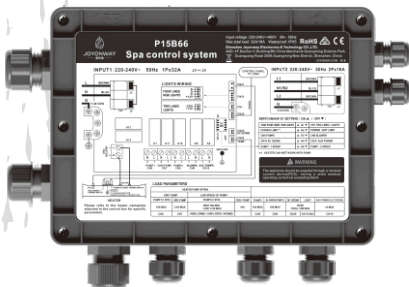


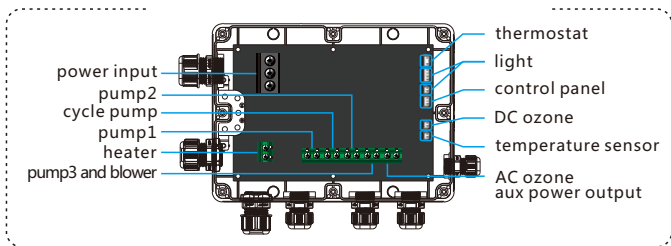


JOYONWAY  
by boospa

# P15B66 control system

## Quick installation guide

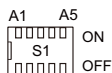




## I

### Configure and connect the loads, when the system is powered off

Configure dial switch position A1-A5 according to the dial switch S1 configuration table (figure on the right) on the control system PCB.



Configure the loads according to dial switch S1 configuration table on the wiring diagram.

#### SWITCHBANK S1 SETTING ( ON ▲ / OFF ▼ )

CN22 FOUR LINES RGB LIGHTS CN22 四线RGB灯	▲ A1 ▼	CN1 TWO LINES LIGHTS CN1 两线灯
POWER LIMIT 功率限制	▲ A2 ▼	POWER NOT LIMIT 功率不限制
CN9 PUMP3 CN9 水泵3	▲ A3 ▼	CN9 BLOWER CN9 风泵
CN10 AC OZONE CN10 AC 臭氧	▲ A4 ▼	CN10 AUX POWER CN10 辅助电源
PUMP1 1 SPEED PUMP1 单速	▲ A5 ▼	PUMP1 2 SPEED PUMP1 双速

**A1 ( RGB light function set )**

ON▲ : four lines RGB lights.

OFF▼ : two lines lights.

**A2 : ( power limit set )**

ON▲ : when the power limit is in effect, heating and pump

(double speed pump in high speed) can not work at the same time.

OFF▼ : power not limit

**A3 : ( CN9 output function set )**

ON▲ : CN9 pump3 output.

OFF▼ : CN9 blower output.

**A4 : ( CN10 output function set )**

ON▲ : CN10 AC ozone output.

OFF▼ : CN10 aux power output.

**A5 : ( pump1 single and double speed set )**

ON▲ : when pump 1 is single speed pump, the circ pump will be a separate independent pump.

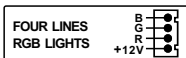
OFF▼ : when pump 1 is double speed pump, the circ pump will be the lower speed pump of pump 1.

**LOAD PARAMETERS**

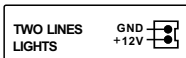
HEATER PUMP OPTION									
CIRC PUMP		LOW SPEED OF PUMP1							
PUMP1 (1 SPD)	CIRC PUMP	PUMP1(2 SPD)	CIRC PUMP	PUMP2	BLOWER (PUMP3)	DC OZONE	LIGHT	AUX POWER (AC OZONE)	
10A MAX	2.5A MAX	HIGH: 10A MAX LOW: 2.5A MAX	N/A	10A MAX	10A MAX	12VDC TOTAL 18W MAX		1A MAX	
CN6	CN7	HIGH-L:CN8(1) /LOW-L:CN1(1) /CN6(2)		CN8	CN9	CN29	CN1/CN22	CN10	

light cable  
connection diagram

1

FOUR LINES  
RGB LIGHTSlight cable  
connection diagram

2

TWO LINES  
LIGHTS

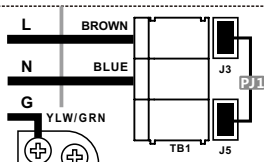
III

**Connect the main power  
(when the control system is powered off)**

Locate the jumper position

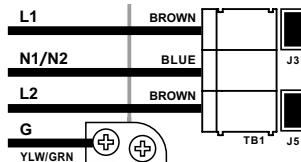
Voltage input : 220-240V~  
50Hz 1P\*32A

Jumper position  
PJ1 J3-J5



Voltage input : 220-240V~  
50Hz 2P\*16A

Jumper position  
N/A N/A



IV

**proper functioning**

When the tub is fully filled with water and powered on, the control system will be able to work properly.



JOYONWAY  
by boospa



**AFTER-SALES SERVICE :**

[www.joyonway.eu](http://www.joyonway.eu)